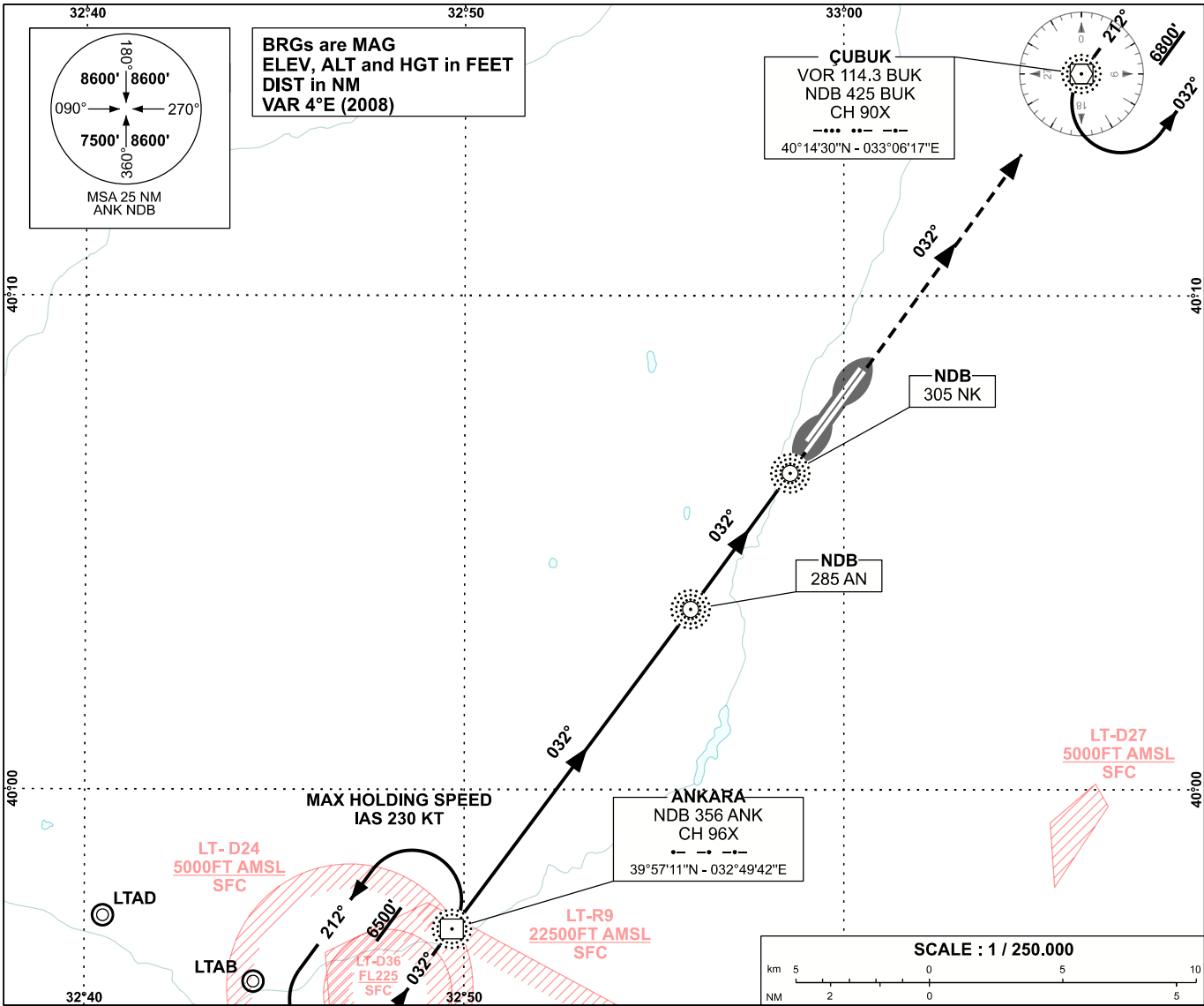


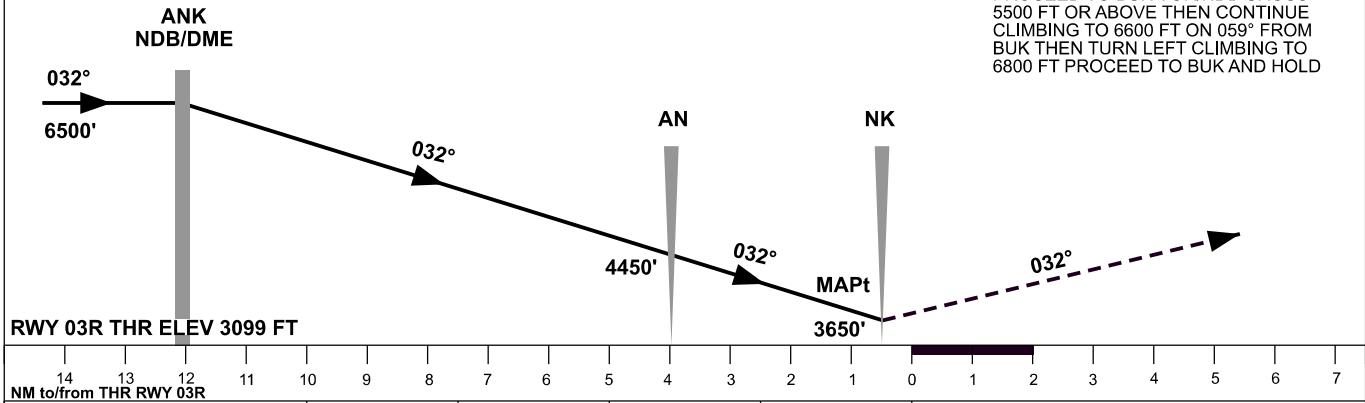
INSTRUMENT
APPROACH
CHART - ICAO

APP	119.6 - 119.1	AD ELEV	3127 FT
TWR	118.1 - 257.8	TRANSITION ALTITUDE	10 000 FT
ATIS	123.6		

ANKARA/ESENBOĞA
NDB Z
RWY 03R



MISSED APPROACH
PROCEED TO BUK VOR/NDB CROSS
5500 FT OR ABOVE THEN CONTINUE
CLIMBING TO 6600 FT ON 059° FROM
BUK THEN TURN LEFT CLIMBING TO
6800 FT PROCEED TO BUK AND HOLD



CHANGE: LT-D36 LIMITS

OCA (H)	A	B	C	D
Straight-in Approach	3650' (551')			
Circling	3800' (673')		4650' (1523')	